



**Newbury
Primary School**

Acknowledgement of Country

Newbury Primary School acknowledges The Wurundjeri People, who are the Traditional Custodians of Craigieburn and the land that our school stands on. We pay our respects to Elders past, present and emerging.

Acknowledgement and Commitment to Diversity

Newbury Primary School acknowledges the many cultures represented in our school community and recognises the importance of the beliefs and traditions they hold.

We are committed to promoting an inclusive culture that encourages and promotes an understanding of race, religion, ethnicity, sexual orientation, gender and identity within our school community.

Dear Parents/Carers

Welcome to our first newsletter of 2024. To all of the new families joining our school, we extend a huge, warm welcome to the Newbury Primary School community and we look forward to getting to know you, and building a positive and trusting relationship. We also welcome back to our returning families. We trust that you and your family had a relaxing break and that you were able to spend some quality time with your loved ones.

At Newbury Primary School, our aim is to provide a safe, secure, stimulating and calm learning environment where high expectations for academic pursuits and behaviour are the norm, where students feel valued, where their thoughts and opinions are considered and effort is recognised. Our classrooms provide a calm and orderly environment, where student wellbeing and engagement is at the centre of all that we do. We have a range of supporting resources available for students to use, to assist with their social, emotional and academic learning. Out in the yard, you will see staff engaging respectfully with students, encouraging play and social interactions and supporting students to have a positive play experience.

Students in Years 1-6 have already spent nine days at school and are settling in well with their new teachers, classmates, classrooms and learning communities. Our Prep students have been with us for five days and are slowly learning what life at school is all about!

The students have had a positive start to the year. Through our Creating a Community program, teachers and students have worked together to create safe, secure, warm and welcoming learning environments. There have been lots of happy students and teachers, as well as many smiling faces, which has been fantastic to see.

Included in this week's newsletter is a brief introduction of our 27 new staff members who are joining the Newbury community in 2024 so that you can put a face to their name.

Please refer to the Important Dates section of the newsletter to see what is coming up. This and other important information can also be found on Sentral.

Important Dates

Friday 16th February
Volunteer Parent Information Session (Arabic)

Friday 23rd February
Volunteer Parent Information Session (Arabic)

Wednesday 6th March
School Photos

Thursday 7th March
School Photos

Friday 8th March
School Photos

Monday 11th March
Labour Day Public Holiday

Thursday 14th March
Forming Partnerships

Friday 22nd March
Social Work Parent Information Session.

Thursday 28th March
Last Day of Term 1
Student Empowerment Fundraiser

For more important dates, please visit:
www.newburyps.vic.edu.au

Apps to Download

Sentral: Keep up to date with instant notifications to your iPad or phone.

QKR!: Make payments online using your debit/credit card for all school events requiring payment.

Office Hours

Monday—Thursday
8.30am - 3.45pm
Friday
8.30am - 3.30pm
03 8691 6900
202-226 Newbury

NEWSLETTER

Issue 1
Friday
9th
February
2024



Thank you to the families who have made Parent Payments. A reminder that only cash is accepted at the office, we do not have an EFTPOS facility.

Payments can be made between 8:30am-3:45pm or by using the Qkr! app on your phone.

SCHOOL UNIFORM

Newbury Primary School's uniform is a child friendly, stylish uniform that stands out within the community; we wear it with pride.

Please ensure that your child is wearing the uniform correctly.

The uniform is as follows:

- Anything from the waist up needs to be an item with a school logo- this includes any jackets. Jackets that are not a school jacket are not permitted. This includes hoodies.
- Pants, shorts and skirts need to be black only. Grey, blue or any other colour is not part of our uniform and is not acceptable.
- Hats need to be broad brimmed. Hats and beanies are available to be purchased from the office. Please see our office staff for assistance.
- Shoes can be any colour but they must be closed toe shoes for safety purposes.

Phone calls will be made to parents and carers whose child is not wearing the uniform correctly.



END OF TERM FINISHING TIMES

At the end of each term, Newbury Primary School students will be dismissed early.

Terms 1, 2 and 3: Students are dismissed at **2:10pm**

Term 4: Students are dismissed at **1:10pm**

Please mark these times and dates on your calendar.

SENTRAL

Newbury Primary School uses Sentral as our main form of communication. It is extremely important that you have this set up on your phone with notifications turned on. If you are having any trouble with accessing Sentral, please see our friendly office staff.



SCHOOL VISION, MISSION AND VALUES:

At Newbury Primary School, we are proud of the educational setting that we have created; where students are nurtured, listened to, cared for and their wellbeing is of the utmost importance. We strive to ensure that each student feels a sense of belonging and pride in themselves and their school. Our vision, mission and values clearly demonstrate this.

Our Vision

To provide a dynamic learning community where all students are empowered to learn and achieve personal success.

Our Mission

At Newbury Primary School we are committed to creating a safe, secure, educationally stimulating, calm and nurturing learning environment underpinned by high expectations and the recognition of effort. We focus on the emotional, social and academic development of every student as an avenue of developing confident, creative, compassionate and informed citizens who are actively engaged in their community. The strong sense of community is evident in the continuous, honest and open dialogue between all stakeholders.

The core beliefs we advocate are:

- Student wellbeing and engagement is at the centre of all that we do
- A positive attitude to academic and social learning is essential
- Personal effort is to be recognised and valued

Our Values

The values that define our school community are:

Respect: Demonstrating care and consideration for ourselves and the feelings, opinions, belongings and expectations of others.

Integrity: Demonstrating honesty and trust through personal accountability and responsibility for our actions.

Effort: Demonstrating a positive attitude and the desire and determination to learn new skills, strive for improvement and be persistent.

Community: Demonstrating and promoting a sense of belonging, unity and connection that is strengthened by a clear understanding of the expectations of all members.

CHILD SAFE STANDARDS:

Ministerial Order 870 - Child Safe Standards - Managing the Risk of Child Abuse in Schools provides guidance on how the Standards apply to a school setting. It came into effect on 1 August 2016. To implement the minimum Standards in accordance with the Order school governing authorities must: take account of the diversity of all children, including (but not limited to) the needs of Aboriginal and Torres Strait Islander children, children from culturally and linguistically diverse backgrounds, children with disabilities, and children who are vulnerable; and make reasonable efforts to accommodate such diversity. Our Child Safe Standards policies are available to view on our school website newbury.ps@education.vic.gov.au



BREAKFAST CLUB:

Our Breakfast Club has started and we are so pleased to be able to offer this to our school community. It is a great pleasure and privilege to see the many smiling faces of students and their families enjoying a toasted sandwich, hot off the barbeque.

I would like to thank our many staff volunteers who assist in making this happen. Thank you also to Mrs Doyle and Mrs Odish who oversee the organisation including food shopping and volunteer rosters.

The Breakfast Club runs every Friday morning and delicious toasted cheese sandwiches are prepared, cooked and handed out with assistance from 8:00am-8:40am. Please come along, spend time together and meet other members of our school community.

A coffee van selling a range of delicious drinks will also be available for purchase. We ask that due to OHS, adults only line up to purchase a hot drink.

BIRTHDAY CELEBRATIONS:

We understand that you may want to do something special at school for your child to celebrate their birthday. Please be aware that only individual lolly bags are permitted to be given to classmates. We thank you for your understanding.

VIDEOS/PHOTOGRAPHS:

Our school policy on photographing, filming and recording students whilst at school states that parent/carer consent needs to be given which is done upon enrolment.

For a complete copy of this policy, please see one of our friendly Office Staff.

GROUNDS UPDATES:

Work has commenced on the Play Space near the front of the school over the break. The site is being excavated and an enormous amount of rock and dirt is being dug up to make way for the newly designed play space.





Newbury
Primary School



Once done, the area will provide an additional play space for students to use and will include a new playground with accessible equipment, musical instruments and more rock pods for passive interaction. We expect this area to be completed by April. Please see below for some drawings of what the new space will look like and include.





Newbury Primary School

BIKES AND SCOOTERS

At Newbury Primary School we promote health and fitness and we encourage students to ride their bikes or scooters to school. Please make sure your child is wearing a helmet and that once they enter the school grounds, they walk their bike or scooter in. The bike sheds are located at the end of the building, near Classrooms 16 and 25.

OFFICE HOURS

The office is open from 8:30am- 3:45pm. The Newbury entrance is for families before and after school, this gate will be shut during school hours. Enquiries can be made during school hours by entering the office on Grand Boulevard.

SCHOOL COUNCIL

Information regarding School Council nominations will be sent home in the next few weeks. We have three parent vacancies available with a two year tenure. Please keep an eye out for this if you are interested in becoming a part of Newbury Primary School's School Council.

SUPERVISION BEFORE AND AFTER SCHOOL

Please note that supervision for students before school commences at 8:45am and after school until 3:25pm. Staff are not on duty beyond these times. Please do not drop off your child before this time or leave them waiting after school beyond this time as they will not be supervised.

ALL DAY GRAZING

At Newbury Primary School, we understand that students need food to fuel their brain and that they are hungry during the day. Therefore, we encourage students to bring along healthy snacks that they can munch on in class. Some ideas include: carrot sticks, cheese, rice crackers, fresh or dried fruit, yoghurt or vegetables. Please refrain from providing food that may affect any anaphylactic students such as nuts, kiwi fruit and strawberries

NAPLAN:

Each year, students in Year 3 and 5 participate in the National Assessment Program for Literacy and Numeracy (NAPLAN) as part of the National Assessment Program which is a Federal Government initiative. Students are assessed in conventions of language reading, writing and numeracy.

In 2024, NAPLAN will be held during Term 1 from **Wednesday 13th March – Monday 25th March.**

ASSEMBLIES:

Please note that due to our student numbers we are no longer having whole school assemblies. Instead, Newbury News is produced and sent out via Sentral throughout each term.



Newbury
Primary School

STUDENT FREE DAYS:

The Department of Education grants schools four student free days per school year. The first day of the year (27th January) is compulsory for all schools to take. Council has approved the following student free days for 2024, to bring our total to four for the year. Please mark them on your calendar.

Friday 10th May

Friday 7th June

Friday 9th August

Monday 4th November (day before Melbourne Cup Day)

OUT OF SCHOOL HOURS CARE :

We are proud to have TheirCare as our out of school hours provider. TheirCare is Australia's most popular Before and After Care School Provider. With a strong focus on safety, staff retention and quality services, TheirCare has made a strong mark in the sector and continues to grow with support of school communities.

The focus of the program is a holistic approach including highly trained staff, more flexibility for families, better safety and supervision, and more engaging and meaningful activities for children.

If you have any specific requirements regarding your child's care you can speak to the on-site coordinator Briana or call the support team on 1300 072 410.

To register and book your child go to www.theircare.com.au and click on "Book Now" in the top right hand corner of the screen.





Newbury Primary School

EVERY DAY COUNTS:

Missing school can have a major impact on a child's future – a student missing one day a fortnight will miss four full weeks by the end of the year. By Year 10 they'll have missed more than a year of school.

There is no safe number of days for missing school – each day a student misses puts them behind and can affect their educational outcomes.

Every day counts and coming to school every day is vital.

The types of absence that require Principal approval are:

- Bereavement
- School refusal
- Family holiday
- Cultural observance- example Eid, Ramadan
- Leisure or social activities
- Special event
- Participation in elite sporting event/training

Please contact the Principal via the school email newbury.ps@education.vic.gov.au to seek approval.

If your child is absent, please notify us using Sentral to explain their absences. All absences must be accounted for on the day of absence.

Students must arrive at school by 9:00am. Classroom doors are open from 8:50am to allow students time to settle in and get themselves organised, ready to start instruction at 9:00am. Arriving at school late interrupts student learning and classroom instruction.

THE EDUCATION EXECUTIVE

The Education Executive is made up of leadership staff who are responsible for overseeing an area of the school. Their role is to support the staff in the learning community and provide instructional leadership.

Prep- Miss Ashleigh Guldon

Year 1- Miss Renee Vigliaturo

Year 2- Mrs Marisa Licciardello

Year 3- Ms Leonie Gasper

Year 4- Mrs Alicia Sankovic

Year 5- Mrs Karlee Bruno

Year 6- Mrs Julie Daniells

Specialists- Mrs Sandra Iskra

Classroom Education Support- Mrs Michelle Nunn

Education Support (other roles)- Miss Aliesha Dellevergini

At Newbury Primary School, all information notices are delivered through Sentral and school website. Only notices that require parent permission will be sent home.



INTRODUCING OUR NEW STAFF MEMBERS

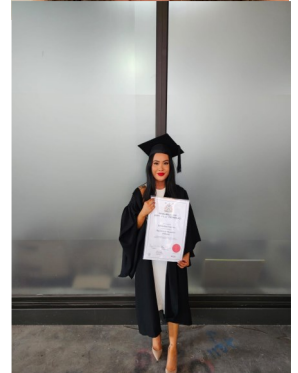
RUBY ZIOGAS- PREP B

Hi everyone! My name is Ruby, and I am very excited to be joining the Prep Learning Community at Newbury Primary School this year. I am a graduate teacher and I'm looking forward to working with students and their families. Within my spare time, I enjoy reading, watching movies and seeing friends and family. I'm looking forward to meeting and working with you all and beginning our learning journey as a community!



EMMA HO- PREP D

Hi everyone, my name is Emma and I am grateful to be starting my teaching career at Newbury Primary School. I am excited and looking forward to joining the Year Prep Learning Community. One of my main goals this year is to develop positive relationships with students and families. Within my spare time I enjoy eating at new places, reading, and catching up with my friends. I look forward to getting to know everyone within this great school community.



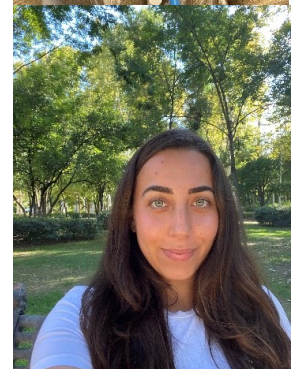
KIMBERLEY BREWIN- PREP F

Hi everyone, my name is Kimberley Brewin and I am very excited to be joining the Prep Learning Community at Newbury Primary School. I'm looking forward to working with families and students. Within my spare time, I enjoy dancing, cooking, traveling and seeing friends and family. I have a great passion for teaching and look forward to meeting you all and beginning our learning journey as a community.



ZILAN CICEK- YEAR 1D

Hi everyone, my name is Zilan Cicek and I am very excited to be joining the Year 1 Learning Community at Newbury Primary School. I'm looking forward to working with families and students. Within my spare time, I enjoy spending time with my family and friends, baking and exploring new places. I enjoy teaching English and look forward to meeting you all and beginning our learning journey as a community.



AMBRIE TRACY- YEAR 1F

My name is Ambrie Tracy, I am thrilled to be a part of the Year 1 Learning Community at Newbury Primary School this year. I love being a teacher and look forward to collaborating with the families and students. Outside of my professional life, I find joy in activities like reading, swimming, yoga, coaching my daughter's netball team, cheering on my sons at hockey, and cherishing moments with family and friends. I am passionate about Literacy and improving my practice to best support all students. I can't wait to meet everyone and embark on our learning journey together as a community.



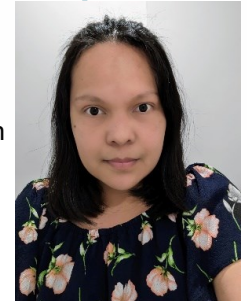


Newbury Primary School

JANICE GIBSON- YEAR 1H

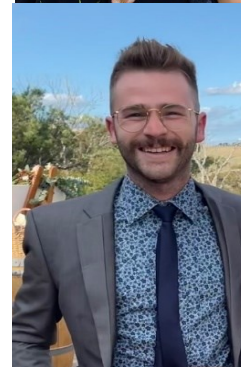
Hi everyone, my name is Janice and I am very thrilled to be joining the Year 1 Learning Community at Newbury Primary School. I am a passionate teacher who endeavours to cater to all students' learning needs. I value building strong relationships with everyone, where we learn together with excitement. Outside of school, I love spending time with my husband and three daughters, having Friday movie nights and traveling overseas. I also enjoy cooking, reading and watching Netflix.

I can't wait to meet all the students, families and staff of Newbury and create a special community together!



TRISTAN FRENCH- YEAR 2A

Hello! My name is Tristan and I will be joining the Year 2 Learning Community at Newbury Primary School. I look forward to working with the students, families and staff in our school community. I have a particular passion for inclusive education and am looking forward to contributing to the already thriving Newbury community. In my own time I enjoy spending time with my family and friends, watching sports and walking my dog.



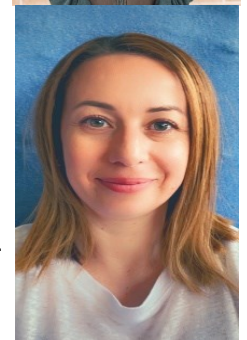
ASHLEIGH LEAHY- YEAR 2A

Hi everyone, my name is Ashleigh (Miss Leahy) and I am extremely excited to be joining the Year 2 Learning Community at Newbury Primary School! I'm really looking forward to working with families and students in the upcoming year as my first-time teaching in a Primary School setting. I completed my Bachelor of Early Childhood and Primary Teaching in January of 2023, and have been working as a 4 year old Kindergarten teacher since then. Within my spare time, I enjoy travelling, playing netball and spending time with friends and family. I have a passion for teaching children all about positive wellbeing and look forward to meeting you all and beginning our learning journey as a community.



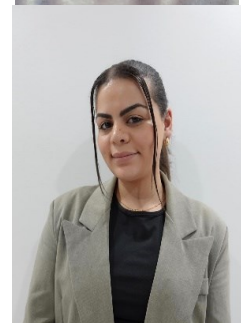
STEPHANIE MENIKOU- YEAR 2F

Hi, my name is Stephanie and I am very excited to be joining the Year 2 Learning Community at Newbury Primary School. I'm looking forward to working with families and students this year. In my spare time, I enjoy watching the tennis and going to the movies. I also enjoy spending time at the beach with my family.



MARY YOUNAN- YEAR 2H

Hello everyone, My name is Mary and I am very excited to be joining Newbury Primary School this year. I feel super lucky to have a job in education and am looking forward to shaping young minds. I spend my free time with friends and family, whether we are having a barbecue at home, going to the movies or going away to the Mornington Peninsula over summer. Aside from that, I love listening to music, going on road trips and Pilates. I look forward to meeting you all.





ARABELLA COOPER- YEAR 3B

Hi everyone, my name is Arabella Cooper and I am very excited to be joining the Year 3 Learning Community at Newbury Primary School. I'm looking forward to working with families and students. In my spare time, I enjoy reading, playing board games, watching musicals, and seeing friends and family. I have a great passion for English and Science and look forward to meeting you all and beginning our learning journey as a community.



SAUENI FERNANDO- YEAR 3E

Hi everyone, my name is Saueni and I am very excited to be part of the Year 3 Learning Community at Newbury Primary School. I'm looking forward to getting to know my students and their families this year. With my spare time, I love spending time with my family and friends, seeing live music, baking cakes, and creating art. I am very passionate about Maths and Art and I look forward to meeting you all and beginning our learning journey as a community.



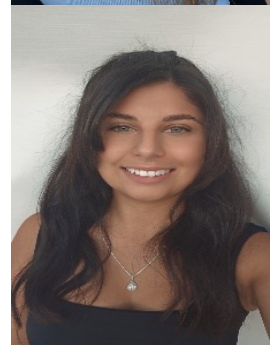
BRIDIE MINOGUE- YEAR 3F

Hi everyone, my name is Bridie Minogue and I am joining the Year 3 Learning Community this year at Newbury Primary school. I am so excited to work with all of our amazing students and families and can't wait to meet you all throughout the year. Besides working with the incredible students at Newbury I like to play netball, watch movies and spend time with my family and friends. I thoroughly enjoy English and crafting and can't wait for the journey 2024 brings.



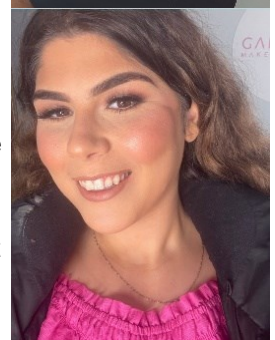
CLAUDIA GARGANO- YEAR 5B

Hi everyone, my name is Claudia and I am very excited to be joining the Year 5 Learning Community at Newbury Primary School. I'm looking forward to working with families and students this year. Within my spare time, I enjoy baking, surfing and spending time with my fur babies. I enjoy reading and have a passion for literacy. I look forward to meeting you all and beginning our learning journey as a community.



HELEN HADDAD- YEAR 5C

Hello everyone, I'm Miss Haddad, and I'm absolutely over the moon to be part of the wonderful Year 5 Learning Community at Newbury Primary School! I'm so excited to team up with all the fantastic families and students for what promises to be an incredible year ahead. In my spare time I like to clean my house and surroundings, stay up-to-date with the latest movies, and cherish those special moments with my friends and family. Now, here's a little fun fact about me – Maths and Science are my absolute favourites! I can't wait to share my passion for these subjects with all of you. I am genuinely bursting with joy to meet each and every one of you and kick-start this amazing learning journey together. Get ready for a fantastic year ahead as we become a close-knit and vibrant community!





AIROM CAMUA- YEAR 6D

Hi everyone, I am Airom Camua-Uyehara, and I am very much looking forward to joining the Year 6 Learning Community at Newbury Primary School. I have a passion for teaching Mathematics and Music, and I enjoy learning about different approaches and techniques for instruction. Apart from this, I am greatly interested in singing, playing musical instruments and other arts and crafts. I am very excited to start the school year and work with the students, colleagues and parents of this wonderful community!



MIA POBLETE-KATSOURIS- EDUCATION SUPPORT

Hi everyone, my name is Mia and I am currently studying to be a teacher. This year I am working as a tutor supporting students with their learning. I am very excited to begin supporting different students. In my spare time, I enjoy going to the beach, shopping, and spending time with family and friends. I can't wait to see what this year brings and being a part of the Newbury community!



SEEMA BHARDWAJ- EDUCATION SUPPORT

Hi everyone, my name is Seema Bhardwaj and I am a part of the Newbury Primary School community in 2024. I am very excited and looking forward to working with students and families. An ideal time for me is reading books, cooking and gardening. I have a dedication for Maths and Arts from my childhood. I am really hoping for the best for our community and looking forward to meeting you all.



BRITTANY COUNIHAN- EDUCATION SUPPORT

Hello everyone, my name is Brittany. I am very excited to be joining Newbury Primary School's Education Support Community this year. I am looking forward to working with students and their families throughout the year. I enjoy exploring new places, listening to music and seeing my friends.



ALEX HAZELMAN- EDUCATION SUPPORT

Hi everyone, my name is Alex Hazelman and I am looking forward to joining the Newbury Primary School Education Support community in 2024. During my spare time, I enjoy spending time with friends and family, colouring, and watching TV shows. I am excited to be working within the school community this year.





SAJA LAFTAH- EDUCATION SUPPORT

Hello everybody, my name is Saja and I am thrilled to be joining the Tutor Learning Initiative community at Newbury Primary School. While joining the Newbury school community this year, I will also be completing my third year of Bachelor of Education at La Trobe University. I am very excited to be working with families and students this year. During my spare time I enjoy baking, going on walks and spending time with my friends and family. I have a strong passion for teaching children mathematics and I look forward to meeting you all and beginning our learning journey as a community.



EMILY SIMPSON- EDUCATION SUPPORT

Hi everyone, my name is Emily Simpson and I am very excited to be joining the Tutoring Learning Community at Newbury Primary School. I'm really excited to begin working with students on improving their literacy skills and knowledge next year. Within my spare time, I enjoy going to the park with my three children, reading, studying, going for family bike rides, camping and spending time with my family and friends. I begin my third year of my Bachelor of Education (Primary) in 2024 at La Trobe University. I have a great passion for teaching, in particular for teaching reading. I look forward to meeting you all and beginning our learning journey as a community.



EZEL DEMIR- EDUCATION SUPPORT

Hi everyone! My name is Ezel and I'm new to the Education Support community at Newbury Primary School. I'm so excited to be a part of Newbury Primary School and look forward to meeting everyone. A little about myself: I have a big family that always keeps me on my toes, I love to be surrounded by my pets. I am a really big animal lover and I love to read in my spare time.



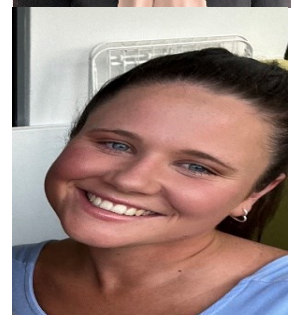
FATIMA ALBATAT- MULTICULTURAL EDUCATION AIDE (ARABIC)

Hi everyone, I'm Fatima Albatat. I'm thrilled to be a part of the school community as a Multicultural Education Aide at Newbury Primary School. I look forward to collaborating with families and students throughout the upcoming year. In my free time, I find joy in reading, expressing myself through art, and spending quality moments with friends and family. My passion lies in both English and Art, and I'm excited to meet each of you and begin this exciting learning journey together as a community. Looking forward to creating wonderful memories at Newbury Primary School.



RUBY COLLINS- STUDENT WELLBEING COUNSELLOR

Hi everyone, my name is Ruby and I am very grateful to be joining the Wellbeing Community as the Student Wellbeing Counsellor. I am excited to work closely with Newbury's students and families and I would like to provide my full support to all. Within my spare time I enjoy listening to music, going to the beach, and walking my two dogs Alfie and Poppy. I hope to create a safe space where students feel safe and supported and look forward to my future working with the school.





Newbury
Primary School

SCOTT GRIGG- STUDENT AND FAMILY CONNECTIONS OFFICER

Hello to everyone within the Newbury Primary School Community, my name is Scott Grigg and I am a new addition to the Learning Community at Newbury Primary School in 2024. I'm genuinely excited about fulfilling the role of Student and Family Connections Officer and the opportunities it may bring for myself and the school community. I like to keep myself fairly active in my spare time, I ensure I keep a balance of spending time with family and friends, coaching responsibilities within the local community of which I have done for over 20 years now and looking for varying opportunities to keep myself somewhat fit. I'm really looking forward to engaging with you all in some format in the foreseeable future and beginning our learning journey together as a community.



SNEZ BELOKOZOVSKI- EXECUTIVE ASSISTANT

Hi everyone, my name is Snez Belokozovski and I am very excited to be joining Newbury Primary School as an Executive Assistant. I'm looking forward to working with families and students in the upcoming year. Within my spare time, I enjoy reading, seeing friends and family and camping. I look forward to meeting everyone.



We are so pleased that you are a part of our school community and thank you for choosing Newbury Primary School. We look forward to working together positively, so that together we can provide the best learning environment and supports for your child.

Principal Class Learning Community

Michelle Nunn

Cameron Traill

Kate Plant

Belinda Rae

Craigieburn Art Group Inc.



Presents their

33rd Annual ART SHOW

At the

**Hume Global Learning Centre
Craigieburn**

Level 1, 95 Central Park Ave,
Craigieburn VIC 3064

(Following current COVID Guidelines)

Free Entry

**Opening Night - Friday 1st MARCH 2024, 7pm.
Officially opened by Hume City Council Mayor,
Cr Naim Kurt.**

Exhibition Open

Saturday 2nd March, 10am - 6pm.

Sunday 3rd March, 12noon - 4pm.

Art Demonstrations:

Sat 11am - Rex Amos - Watercolour.

Sat 1pm - Ian Harker - Oil Painting.

Sun 1pm - Michelle Wilson - Printmaking.

Contact: Vicki Catchpole 0417559089.

email: craigieburnartgroup@gmail.com

www.craigieburnartgroup.org

Inc Reg No: A0021472F

With Thanks to

Hume City Council Event Sponsorship.



DONATIONS WELCOME

Please feel free to donate any unwanted school uniforms:
Jackets, long /short sleeve polo shirts, summer/ winter dresses, backpacks, hats, beanies and headbands to our office.

SECONDHAND UNIFORMS FOR SALE

We have a limited number of second uniform items for sale which can be purchased through the QKR app



Jackets, long /short sleeve polo shirts, summer/ winter dresses and backpacks

\$5 each



Hats,beanies or headbands

\$2 each



This year Newbury Primary School has been undertaking work to become a certified eSmart school. eSmart is an initiative of the Alannah and Madeline Foundation that aims to create a culture of smart, safe, and responsible use of technology.

eSmart recognises the important role schools play in preparing students to confidently navigate a digital world and supports the implementation of evidence-based policies and practices to promote cyber safety and assist in the prevention of cyberbullying.

Last week, we submitted our last items of evidence and are now an accredited eSmart school. We look forward to continuing to embed the eSmart initiative across the Newbury Primary School community.

**We are an
eSmart school**

esmart.org.au





Australian Childhood Anxiety TREATMENT STUDY

Free home-based assessment and treatment for 7 to 12 year old children with fear and anxiety disorders.

Does your child become very afraid of certain situations or objects, worry about a lot of things, get very distressed, or try to avoid things they fear?

About the study

Our team at Griffith University may be able to assist you. We are conducting a nationwide study that includes the following services at no cost to families:

- A thorough assessment of your child's anxiety with a trained psychologist via the telephone;
- Your child receiving one of two kinds of home-based treatments delivered on a PC, laptop or tablet; and
- Two follow-up telephone assessments with a trained psychologist 6- and 12-months after treatment to track your child's progress.

The study aims to find out if these two treatments are as effective as each other, and which children have the best response to each kind of treatment. This will mean that there are more evidence-based treatments available for helping anxious children.

About the treatments

Each treatment involves your child completing treatment sessions at home on a PC, laptop or tablet.

Each treatment involves your child learning practical strategies to better manage anxiety.

- One treatment helps children learn to control the focus of their attention on helpful things around them.
- The other treatment helps children learn to think differently and approach things they fear.

Each treatment includes information, telephone or email support for parents in assisting their child to better manage anxiety.

Prior studies have shown that children who complete each treatment experience significant reductions in anxiety.

Contact us

This study is being funded by the National Health and Medical Research Council and is led by Professor Allison Waters and a team of experts in childhood anxiety disorders.

For more information about our study and our team, or if you would like your child to participate, please contact us:



(07) 3735 3351



cadrp@griffith.edu.au



griffith.edu.au/childhood-anxiety-treatment-study



Australian Government
National Health and
Medical Research Council

 **Griffith**
UNIVERSITY
Queensland, Australia

GU Ref No: 2019/146



HAY FEVER TIPS



Hay fever (allergic rhinitis) is an allergic reaction to airborne allergens such as pollen, dust mites, moulds, and animal dander.

The best way to reduce hay fever symptoms is to avoid allergy triggers and use appropriate treatment.

While seasonal hay fever occurs mainly in spring and summer and affects people allergic to pollens. Hay fever can also occur all year round.

Try staying indoors when the pollen count is high.

Try not to rub or scratch itchy skin and eyes.

Wear Sunglasses, carry tissues and rinse your face and eyes regularly.

Carry a face washer in your bag to wash your face and help relieve any symptoms.

Always carry your Ventolin if you have been diagnosed with Asthma.

Avoid playing or walking in long grass.

Speak to your doctor about medications that may help your symptoms.





TheirCare
Where Kids love to be!

Newbury Primary School

Social, enjoyable
& fun experiences
for children

Develop creativity, life
skills & confidence
through play

Qualified, caring &
engaged staff

Exciting &
thoughtfully
developed programs

Healthy & Yummy
food provided
each day



Bookings now open!

	Monday - Friday Hours of Operation	Fees before Child Care Subsidy*	Out-of-pocket fees after Child Care Subsidy**
Before School Care (BSC)	6:30 AM to 8:50 AM	\$23.00	\$2.30
After School Care (ASC)	3:00 PM to 6:30 PM	\$27.83	\$2.78
Pupil Free Day	6:30 AM to 6:30 PM	\$72.63	\$7.26
Holiday Program***	N/A	N/A	N/A

*Standard fee costs before Child Care Subsidy / ** Standard fee costs after maximum Child Care Subsidy / *** Standard fee costs excluding incursions/excursions

Cancellation Fees

(No Child Care Subsidy applied to Cancellation Fees)

BSC/ASC within 48 hours of session start time: **\$5.00**

Holiday Program within 5 days of session start time: **\$10.00**

Same day cancellation fee is out-of-pocket session fee.

Late Booking Fees

(Child Care Subsidy is applied to Late Booking Fees)

BSC/ASC within 48 hours of session start time: **\$5.00**

Holiday Program: book less than **5 days** from
the session start time fee is **\$10.00**

Late Pick-up Fees

(Child Care subsidy does not apply to Late Pick-up Fees)

\$1 per minute after service close time.

To register visit theircare.com.au



Service Phone number:
0477 718 066

Your service Coordinator will be
available during session times.

Save up
to 90% with
the Child Care
Subsidy!



TheirCare support team is available between 6.30am - 9pm weekdays (Eastern Standard Time)
on **1300 072 410** or **info@theircare.com.au**

Interested in advertising in our newsletter?

Contact us on 8691 6900

Newsletter advertisements will be 1/4 of an A4 page or as close as we can position it depending on the advertisement provided to the school.

The cost of this advertisement is \$25.00 and the newsletter is distributed via the website.

Payment will need to be made at least 3 business days before the newsletter is published.



TENNIS PARADISE!

TENNIS VICTORIA CLUB OF THE YEAR 2023

TENNIS WHIZ HOT SHOTS 5+ TEENS TENNIS CARDIO TENNIS

FRIENDLY SOCIAL INCLUSIVE

HUME TENNIS
AND COMMUNITY CENTRE

1300 486 382 www.humetennis.com.au



GKR KARATE
KARATE FOR EVERYONE



FREE UNIFORM
+ DISCOUNTED MEMBERSHIP (NUMBERS LIMITED)

- Build Confidence, Strength And Discipline
- Fitness With Purpose!
- Open To All Ages – Families Welcome

MENTION THIS FLYER TO RECEIVE OUR SPECIAL OFFER
Alf 0417595046
www.gkrkarate.com

Interested in advertising in our newsletter?

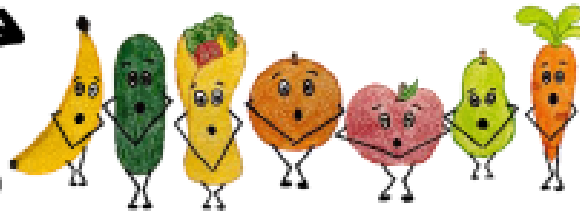
Contact us on 8691 6900

WHAT IS



WASTE-FREE WEDNESDAY?

Will you make
your food **Nude**?



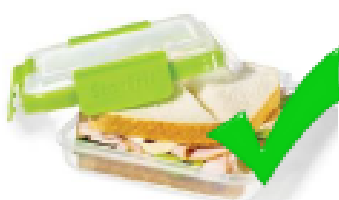
Every Wednesday we encourage all students and staff members to bring a Waste-Free lunch, also called 'Nude Food'

Did you know that plastics like cling wrap and zip lock bags can take up to 1000 years to decompose?

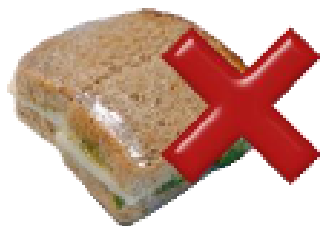


We challenge you to bring a waste-free lunch every Wednesday! You'll be:

- Choosing healthier options, like more fruit and veggies
- Spending less on lunchbox treats
- Environmentally friendly
- Helping to Keep Newbury Beautiful



Reusable
Sandwich Box



Cling Wrap



Fruit, vegetables
and crackers



Chip
Packets

About Us

State Schools' Relief is unique. No other Australian state or territory has a similar organisation.

Since 1930, State Schools' Relief has been providing anonymous support so that students receiving our assistance can do so with dignity. It's our belief that every student deserves the opportunity to participate in their education without barriers.



Who are we?

State Schools' Relief is a Victorian not-for-profit organisation that supports the needs of disadvantaged government school students by providing new school uniforms, school shoes and a host of other essential educational resources, including learning devices.

Our simple and practical service ensures that all students can attend school in warmth and comfort with a greater sense of belonging and improved self-esteem, which in turn assists students to engage in their learning and strengthen their educational outcomes.



How we help

Issues such as poverty, neglect, unemployment, health issues/ illness, financial hardship, bereavement, domestic violence, homelessness, and natural disasters continue to affect many Victorian families. We work side by side with all Victorian primary, secondary, specialist and language schools to ensure that any students facing hardship have the necessary items they require for school.



State School Relief - Assistance for Victorian Families to purchase uniform items. If you and your family are experiencing one or more of the following hardship/s, you will be eligible for assistance for uniform items for your child/children. This includes shoes, glasses, lunch boxes, school bags and drink bottles.

* Crisis/Emergency/illness * Financial hardship * Family violence * Homelessness * Indigenous * Refugee * Natural disaster

Please email communication@newburyps.vic.edu.au in the subject area include State School Relief. In the email highlight the area of hardship and what uniform items you require for your child/children and approximate sizes. State School Relief will either cover the entire cost of the items or they may require you to make a small payment.

If you require further information please email your questions to the communication email and a staff member will get back to you.

Thank you
The Newbury Primary School Wellbeing Community

State Schools' Relief 1/8 Johnston Court, Dandenong South VIC 3175 | PO Box 4528, Dandenong South VIC 3184
03 8769 8400 | contact@ssr.net.au | www.stateschoolsrelief.org.au | ABN: 77 455 214 193





Newbury Primary School Behaviour Expectations



	Learning Spaces	Outside	Toilets	Digital World
Respect We care	<ul style="list-style-type: none"> Listen and look Be aware of personal space Care for resources and displays 	<ul style="list-style-type: none"> Walk on footpaths Think before speaking and acting Treat others fairly Line up on time 	<ul style="list-style-type: none"> Leave our toilets clean Knock and lock Be aware of personal space 	<ul style="list-style-type: none"> Be mindful of the privacy of others Think and ask before posting Care for our devices
Effort We try our best	<ul style="list-style-type: none"> Be the best we can be Celebrate every effort Be ready for learning 	<ul style="list-style-type: none"> Plan for play Play safely Be problem solvers 	<ul style="list-style-type: none"> Get in, get out Wash our hands Return to class quickly 	<ul style="list-style-type: none"> Stay on task Be ready for learning
Integrity We do the right thing	<ul style="list-style-type: none"> Be good community members Make good choices Be resilient 	<ul style="list-style-type: none"> Be honest Seek help if needed Keep our hands and feet to ourselves 	<ul style="list-style-type: none"> Leave the play for outside Be water wise Use the toilet during breaks 	<ul style="list-style-type: none"> Keep it private Work and search responsibly Use school approved apps
Community We belong	<ul style="list-style-type: none"> Contribute, care and share Be safe in our space Accept everybody 	<ul style="list-style-type: none"> Include others Keep Newbury beautiful Be role models 	<ul style="list-style-type: none"> Wait for our friends Keep our voice down when moving around 	<ul style="list-style-type: none"> Speak up when things do not seem right Stay safe online Look out for others

Could you be a Foster Carer?



Scan me!

Find out more about
foster care and
how you can make
a difference.

We want to work with you to make a positive and lasting difference to the lives of children in your community.

As a Key Assets foster carer we'll provide you with 24/7 support, a dedicated social worker and on-going training. If you're looking to provide love, safety and care for a child we'd love to hear from you.



In primary school, some students **miss** on average **3 weeks** of school per year. That's **half a year** of school by the end of **year 6**.



EVERY DAY COUNTS

Primary school attendance

Going to school every day is the single most important part of your child's education. Students learn new things at school every day – missing school puts them behind.

Why it's important

We all want our students to get a great education, and the building blocks for a great education begin with students coming to school each and every day.

If students miss school regularly, they miss out on learning the fundamental skills that will set them up for success in the later years of school.

There is no safe number of days for missing school – each day a student misses puts them behind, and can affect their educational outcomes.

Each missed day is associated with progressively lower achievement in numeracy, writing and reading.

Getting in early

Attendance patterns are established early – a child regularly missing days in kindergarten or in the early years of school will often continue to miss classes in the later years, and receive lower test scores than their classmates. It's vital that students go to school every day – even in the early years of primary school.

What we can do

The main reasons for absence are:

Sickness – There are always times when students need to miss school, such as when they're ill. It's vital that they're only away on the days they are genuinely sick, and setting good sleep patterns, eating well and exercising regularly can make a big difference.

It's vital that holidays are planned during school holidays where possible, and not during the term if it can be avoided.

"Day off" – Think twice before letting your child have a "day off" as they could fall behind their classmates – every day counts.

Truancy – This is when students choose not to go to school without their parent's permission. There can be many reasons for truancy. The best way to address this is for schools and parents to work together.

If for any reason your child must miss school, there are things you can do with your school to ensure they don't fall behind:

- Speak with your classroom teacher and find out what work your child needs to do to keep up.

- Develop an absence learning plan with your teacher and ensure your child completes the plan.

Remember, every day counts. If your child must miss school, speak with your classroom teacher as early as possible.

Openly communicating with your child's school about all absences is a good way to prevent attendance issues being escalated to a School Attendance Officer. Attendance issues that are escalated can lead to an Infringement Notice.

If you're having attendance issues with your child, please let your classroom teacher know so we can work together to get your child to school every day.

For more information and resources to help address attendance issues, visit: www.education.vic.gov.au

VICTORIA
AS A LEARNING
COMMUNITY

ROAD SAFETY



Here at Newbury Primary School we take the safety of our students seriously. Please refer to the VicRoads information below and discuss with your children the importance of road safety.

Crossing the road safely

Pedestrians have to share the road with vehicles so it is important they take care when crossing the road. As a pedestrian, plan where you will walk and always choose the safest place to cross a road.

Stop, Look, Listen, Think

Follow the safe road crossing procedure – STOP, LOOK, LISTEN and THINK.

- STOP one step back from the kerb or shoulder of the road if there is no footpath.
- LOOK in all directions for approaching traffic.
- LISTEN in all directions for approaching traffic.
- THINK about whether it is safe to cross the road – when the road is clear or all traffic has stopped.

When crossing, walk straight across the road. Keep LOOKING and LISTENING for traffic while crossing. This information is particularly relevant to young people learning to cross roads. But it also provides a useful reminder to everyone particularly to those who may be distracted when crossing the road.



Crossings

Even at crossings you still need to remain alert and check whether vehicles are stopping for you. Always make sure traffic has actually stopped before stepping onto the road.

Remember children's crossings are legally active only when the flags are displayed. If a school crossing supervisor is on duty, cross only when he or she indicates that it is safe.

Crossing the road at other places

- Walk straight across the road – don't jay-walk.
- Keep checking in both directions to make sure the way is clear.
- Try not to cross the road from between parked cars or near trees and bushes as drivers may not see you.
- Avoid crossing near a bend or crest in the road. Give yourself a good chance to see vehicles coming from both directions.
- Avoid crossing on roundabouts, particularly multi-lane roundabouts as they are very busy and complex and cars are not required to give way to you, unless there is a pedestrian crossing. Find somewhere further away from the roundabout to safely cross the road.



Wellbeing Support

At Newbury Primary School we value and acknowledge the wellbeing of all students, staff and community members. Below we have provided wellbeing support numbers that are accessible for everyone at any time when needed.



Safe Steps 1800 015 188

Foundation House
9389 8900



**Foundation
House**

The Victorian Foundation for Survivors of Torture

1800RESPECT
NATIONAL SEXUAL ASSAULT, DOMESTIC
FAMILY VIOLENCE COUNSELLING SERVICE

1800 RESPECT
1800 737 732

Lifeline 13 11 14

 **Lifeline** Saving
Lives
Crisis Support. Suicide Prevention.